
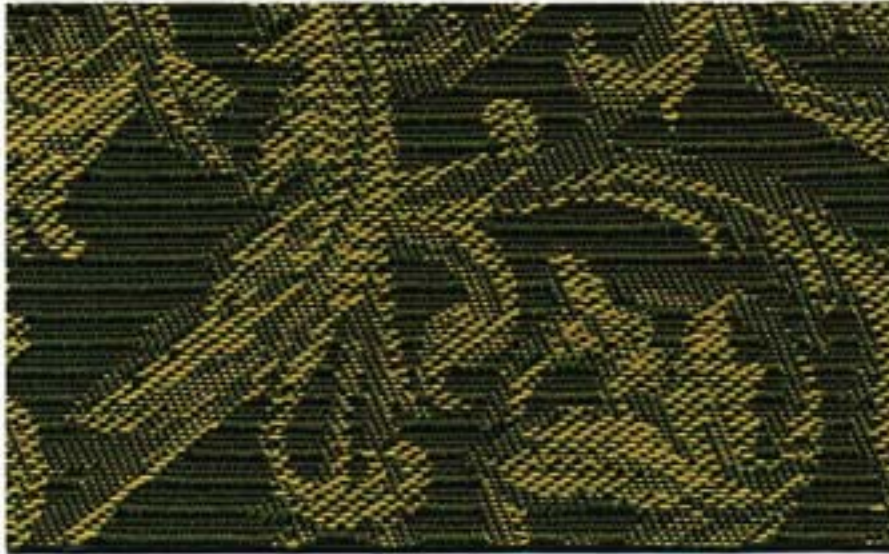


AMENITIES COLLECTION

 upholstery fabric



Allure - Pesto



Tartaine - Sage



Starlet - Village Green



Parlour - Grassland



Versa - Marshland



Allure - Gold Rush



Tartaine - Harvest



Starlet - Paprika



Parlour - Honey Gold



Versa - Mango

AMENITIES COLLECTION



Allure - Indigo



Tartaine - Medley Blue



Parlour - Wilshire Blue



Versa - Mosaic Blue



Starlet - Basic Blue



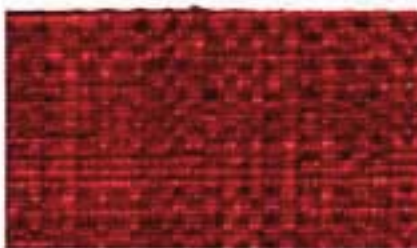
Allure - Regency Red



Tartaine - Valentino



Parlour - Rio Red



Versa - Valentine



Starlet - Colonial Red

AMENITIES COLLECTION

upholstery fabric

Specifications/Performance

| PATTERN/ DIRECTION WIDTH: 54" | FIBER | REPEAT | BACKING/ FINISH | WEIGHT (±1 oz. per linear yard) | CLEANING CODE* | ABRASION ASTM-D-4157 (Woolenbeek-Wire Screen) | LIGHTFASTNESS AATCC (Test Method 16E) | SEAM SLIPPAGE ASTM-4034 |
|--|--|--------------------------------------|--------------------|---------------------------------------|-------------------|---|---|--------------------------------|
| Allure Suitable for Railroading | 100% Polyester | 7" Horizontal 8 5/8" Vertical | Acrylic | 10.0 oz. | WS | 50,000 Double Rubs | 40 Hours Class 5 | Warp: 90 lbs. Fill: 68 lbs. |
| Parlour Not suitable for Railroading | 100% Polyester | 3/4" Horizontal 3/4" Vertical | Acrylic | 10.8 oz. | WS | 50,000 Double Rubs | 40 Hours Class 5 | Warp: 90 lbs. Fill: 74 lbs. |
| Starlet Suitable for Railroading | 100% Polyester | 1 3/4" Horizontal 2 1/8" Vertical | Acrylic | 11.3 oz. | WS | 50,000 Double Rubs | 40 Hours Class 5 | Warp: 94 lbs. Fill: 64 lbs. |
| Tartaine Suitable for Railroading | 84% Polyester 12% Cotton 4% Acrylic | 7" Horizontal 2 1/4" Vertical | Acrylic | 11.5 oz. | WS | 60,000 Double Rubs | 40 Hours Class 5 | Warp: 94 lbs. Fill: 64 lbs. |
| Versa Suitable for Railroading | 44% Polyester 42% Cotton 14% Acrylic | None | Acrylic | 14.6 oz. | WS | 50,000 Double Rubs | 40 Hours Class 4 | Warp: 46 lbs. Fill: 38 lbs. |

All patterns meet the following requirements for flame resistance:
California Technical Bulletin 117, Section E • NFPA 260-1989, Class 1 • CS-191-53, Class 1 •
UFAC, Class 1 • BIFMA X5.7-1991 • B.S. 5852 Part 1:1979 Ignition Source 0; Smouldering Cigarette

Fabric Performance Symbols indicate that a fabric performs to commercial furniture manufacturing standards and passes all applicable testing as specified by the Association for Contract Textiles (ACT).

*WS - For water based stains use water based cleaning agents. For oil based stains use solvent cleaner.

tissus pour siège

Spécifications/Performance

| PATRON/ SENS DU MOTIF/ LARGEUR: 137/140 cm (54") | FIBRE | RAPPORT | ENDOS/ TRAITEMENT | POIDS (±1 on/verge linéaire) | NETTOYAGE* | RÉSISTANCE À L'ABRASION ASTM-D-4157 | RÉSISTANCE DE LA COULEUR AATCC-16E | GLISSEMENT DE LA COÛTURE ASTM-4034 |
|---|---|--|----------------------|------------------------------------|------------|---|--|--|
| Allure Peut être utilisé à contresens | 100% Polyester | 17.8 cm Horizontal 21.8 cm Vertical | Acrylique | 10.0 on. (309 g/m) | WS | 50,000 Double Cycles | 40 Heures Classe 5 | Chaine: 90 lbs. Trame: 68 lbs. |
| Parlour Ne peut pas être utilisé à contresens | 100% Polyester | 1.9 cm Horizontal 1.9 cm Vertical | Acrylique | 10.8 on. (334 g/m) | WS | 50,000 Double Cycles | 40 Heures Classe 5 | Chaine: 90 lbs. Trame: 74 lbs. |
| Starlet Peut être utilisé à contresens | 100% Polyester | 4.4 cm Horizontal 5.4 cm Vertical | Acrylique | 11.3 on. (348 g/m) | WS | 50,000 Double Cycles | 40 Heures Classe 5 | Chaine: 94 lbs. Trame: 64 lbs. |
| Tartaine Peut être utilisé à contresens | 84% Polyester 12% Coton 4% Acrylique | 17.8 cm Horizontal 5.7 cm Vertical | Acrylique | 11.5 on. (355 g/m) | WS | 60,000 Double Cycles | 40 Heures Classe 5 | Chaine: 94 lbs. Trame: 64 lbs. |
| Versa Peut être utilisé à contresens | 44% Polyester 42% Coton 14% Acrylique | Aucun | Acrylique | 14.6 on. (451 g/m) | WS | 50,000 Double Cycles | 40 Heures Classe 4 | Chaine: 46 lbs. Trame: 38 lbs. |

INFLAMMABILITÉ:
Bulletin Technique de la Californie 117, Section E • NFPA 260-1989, Classe 1 • CS-191-53, Classe 1 •
UFAC, Classe 1 • BIFMA X5.7-1991 • B.S. 5852 Part 1:1979 Ignition Source 0; Smouldering Cigarette

Les Symboles de Qualité d'un Tissu indiquent que celui-ci répond aux normes établies par les fabricants de meubles commerciaux et passe tous les tests applicables requis par la "Association for Contract Textiles" (ACT).

*WS - Pour taches à base d'eau utiliser un produit de nettoyage à base d'eau. Pour taches à base d'huile utiliser un produit de nettoyage avec solvant.

telas de tapicería

Especificaciones/Funcionamiento

| PATRÓN/ DIRECCION/ ANCHO: 137/140 cm | COMPOSICIÓN | REPITIR | PESO/ TRATAMIENTO | PESO (±28 gramos por metro lineal) | LIMPIEZA* | RESISTANCIA A LA ABRASION ASTM-D-4157 | RESISTANCIA DEL COLOR AATCC-16E | FUERZA DE LA COSTURA ASTM-4034 |
|---|--|--|----------------------|--|-----------|---|---------------------------------------|--------------------------------------|
| Allure Se puede usar de un lado | 100% Poliéster | 17,8 cm Horizontal 21,8 cm Vertical | Acrílico | 309 g/m | WS | 50,000 Roces Dobles | 40 Horas Clase 5 | Urdido: 90 lbs. Trama: 68 lbs. |
| Parlour No se puede usar de un lado | 100% Poliéster | 1,9 cm Horizontal 1,9 cm Vertical | Acrílico | 334 g/m | WS | 50,000 Roces Dobles | 40 Horas Clase 5 | Urdido: 90 lbs. Trama: 74 lbs. |
| Starlet Se puede usar de un lado | 100% Poliéster | 4,4 cm Horizontal 5,4 cm Vertical | Acrílico | 348 g/m | WS | 50,000 Roces Dobles | 40 Horas Clase 5 | Urdido: 94 lbs. Trama: 64 lbs. |
| Tartaine Se puede usar de un lado | 84% Poliéster 12% Algodón 4% Acrílico | 17,8 cm Horizontal 5,7 cm Vertical | Acrílico | 355 g/m | WS | 60,000 Roces Dobles | 40 Horas Clase 5 | Urdido: 94 lbs. Trama: 64 lbs. |
| Versa Se puede usar de un lado | 44% Poliéster 42% Algodón 14% Acrílico | Ninguno | Acrílico | 451 g/m | WS | 50,000 Roces Dobles | 40 Horas Clase 4 | Urdido: 46 lbs. Trama: 38 lbs. |

RESISTANCIA AL FUEGO:
California Technical Bulletin 117, Section E • NFPA 260-1989, Classe 1 • CS-191-53, Classe 1 •
UFAC, Classe 1 • BIFMA X5.7-1991 • B.S. 5852 Part 1:1979 Ignition Source 0; Smouldering Cigarette

Los símbolos de tapicería de ejecución indican que la tapicería funciona en la factura comercial del mobiliario por las reglas establecidas y pasan todos los reglamentos específicos de la Asociación de Contrato Textil (ACT).

*WS - Para manchas a base de agua usar limpiadores a base de agua. Para manchas a base de aceite usar limpiadores solventes.

SUGGESTED APPLICATIONS FOR THESE PATTERNS ARE:



FABRICS BY ABSECON MILLS INC. • 04/2005

For A&D Style samples contact info@aandstyle.com

